



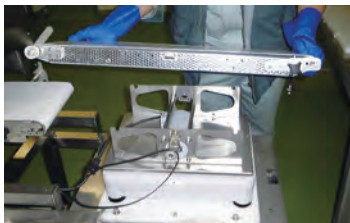
UPER PROFESSIONAL

3D Measurement System Multi Slicer

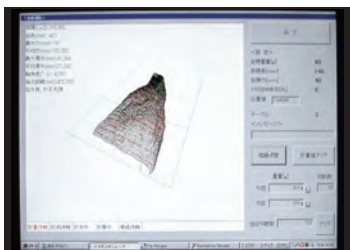


<Features>

- Portion cutting machine for **Raw** fish
 - Enable portion cutting near the seaport or fish farm
(fresh and good quality Kirimi is available)
 - Easy operation
(Just setting weight, length and width then the machine cuts clearly)
 - Hygienic, easy, cleaning access
(Weighting conveyor, measuring conveyor, needle, and cutting board are easily removable)
- *See pictures below



3D Measurement System

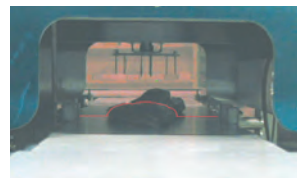


Decoded fish body data on the touch panel

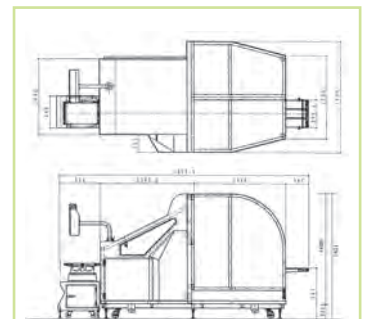
As fish goes through the scanning machine, it will be sensed by 3D gauge system. After that, our application software decodes immediately the data from the system and computes how to cut.



Weighting conveyor



Measuring conveyor



Robot Cutting System



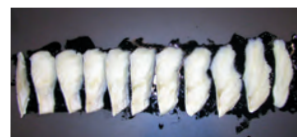
Six-axis robot w/ circle saw

Capacity 1,800 Cuts/Hour
*Based on 1 fillet for 10 cuts

Six-axis robot with circle saw enable to cut clearly and quickly.



Processed Salmon



Processed Cod

Specification

Size	Total length	-----	3,668mm
	Total width	-----	1,600mm
	Total height	-----	1,821mm
	Length	-----	Less than 400mm
	Width	-----	Less than 200mm
	Weight	-----	1.3t
	Power supply	---	8kw (3Phase 200v)
	Air Consumption	-----	150 ℓ / min
	Water Consumption	-----	10 ℓ / min
	Robot	-----	6 Axis

※It is prohibited by law to copy for manufacture all and/or part of this system. These specification will be changed for improvement/modification without notice.

Nikko CO., Ltd.

URL <http://www.k-nikko.com>

Head office

■ 110-1 Tsuruno, Kushiro-shi, Hokkaido, Japan, 084-0924
TEL +81-154-52-7101 FAX +81-154-53-0878

International office

■ 1-9-1, Nishishinkoiwa, Katsushika-ku, Tokyo, Japan, 124-0025
TEL +81-3-5654-6770 FAX +81-3-6853-0055