

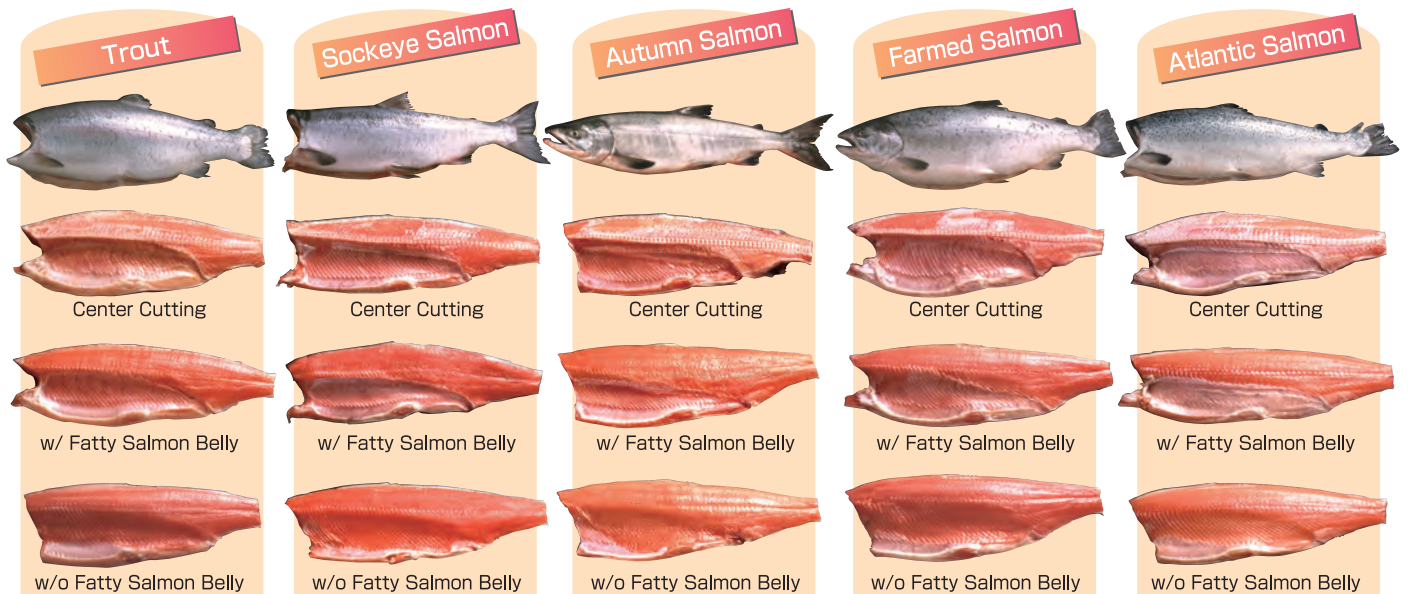


Salmon Filleting Machine  
**BAND FISHER**  
NSB-300

- Cut 3 types of fillet without rearranging the line  
\*Center cutting is optional (need extra parts)
- Reduce damages to fish body (avoid cracked fish)
- Increase yield (7% up)
- Easy maintenance and hygienic control
- Available for both fresh and frozen



Capacity  
25~30 fishes/min



## High Yield Rate (How thin it is!)



■ Autumn Salmon ■



■ Trout ■



■ Sockeye Salmon ■



■ Farmed Salmon ■



■ Atlantic Salmon ■

**Increase 7% Up!** (Comparison with competitors' machines)

Center Cutting

# BAND FISHER

All you need is just setting a fish into the machine.  
Easily dividing fish into half

### Available for multiple fish species.

Salmon (Trout, Salted Salmon, Autumn Salmon, Atlantic Salmon)  
Mackerel, Hokke Fish, Red Fish, and Sea Bream



■ Trout ■



■ Salted Salmon ■



■ Mackerel ■



■ Hokke Fish ■



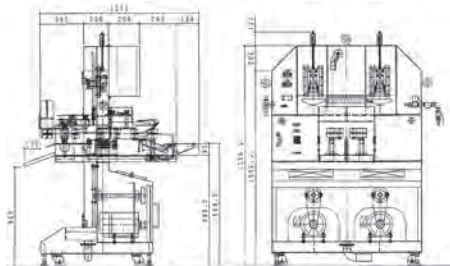
■ Red Fish ■



Salmon Filleting Machine

# BAND FISHER

NSB-300



Size Total length --- 1,270 mm  
Total width ----- 1,200 mm  
Total height --- 1,880 mm

Weight ----- 495kg

Capacity ----- 25~30 Fish/min

Power Supply ----- 4.6kw

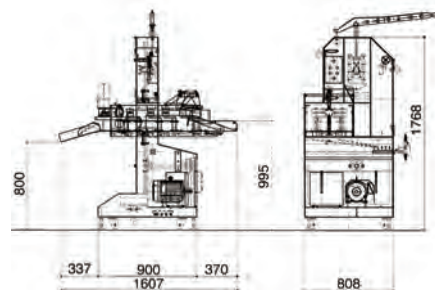
Water Consumption -- 40 ℓ /min

Air Consumption 57 ℓ /min (Need Compressor)

Fish Size ---- Round 2-6kg / Fish

Center Cutting

# BAND FISHER



Size Total length --- 1,607 mm  
Total width ----- 808 mm  
Total height --- 1,767 mm

Weight ----- 300kg

Capacity ----- 25~30 Fish/min

Power Supply ----- 2.4kw

Water Consumption --- 40 ℓ /min

Fish Size ---- Round 2-6kg / Fish

※It is prohibited by law to copy for manufacture all and/or part of this system. These specification will be changed for improvement/modification without notice.

# Nikko Co., Ltd.

URL <http://www.k-nikko.com>

### Head office

■ 110-1 Tsuruno, Kushiro-shi, Hokkaido, Japan, 084-0924  
TEL +81-154-52-7101 FAX +81-154-53-0878

### International office

■ 1-9-1, Nishishinkoiwa, Katsushika-ku, Tokyo, Japan, 124-0025  
TEL +81-3-5654-6770 FAX +81-3-6853-0055